

Sudden Oak Death

What can you do?

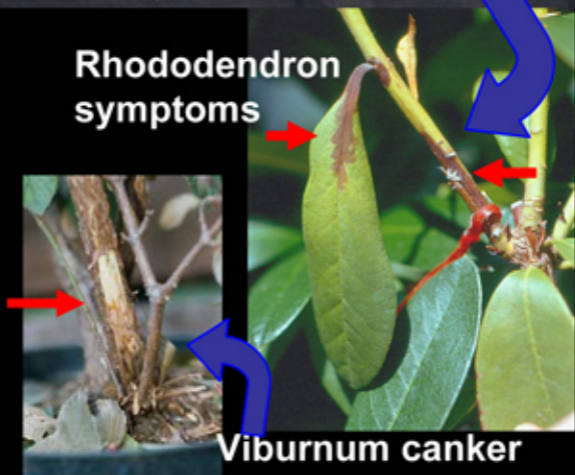
Picture Clues:

Camellia leaf symptoms



Leaf and twig blights

Rhododendron
symptoms



Viburnum canker

How to collect a good sample

- For now, only collect camellia, viburnum, and rhododendron species with symptoms closely resembling those on the front of this card.
- Place symptomatic leaves and stems between dry paper towels, then in double zip-lock bags.
- Gather all information necessary (where the sample was found, when and where the plant was purchased, etc).
- Sanitize your hands, pruners, etc. with hand sanitizer after packaging.
- Keep the sample in a cool, dark place before and during transport
- Dispose of any suspect plant material by bagging it and placing it with your trash; do not compost or recycle it.

Submit samples to your nearest County Extension office or to the Division of Plant Industry

For more information, direct your browser to <http://spdn.ifas.ufl.edu> or call the DPI hotline at 888-397-1517