

## BOTANY SECTION Compiled by Richard E. Weaver, Jr., Ph.D.

For this period, 106 specimens were submitted to the Botany Section for identification, and 1,751 were received from other sections for identification/name verification, for a total of 1,857. Some of the samples sent in for identification are discussed below.

*Chamaerops humilis* L. (A genus with one species, native to southern Europe, North Africa and Malta.) Palmae. **European fan palm, Mediterranean fan palm.** This is the only palm species native to the European mainland. Widely cultivated as an ornamental, this palm is quite variable. In fact, some forms have even been named as separate species in the past. Although most often seen with multiple trunks, solitary forms are not uncommon, and both can reach 7 m in height, but are usually no more than 2 m. The stem is covered with fibers and persistent petiole bases. The deeply-divided palmate leaves have bifid leaf tips. The petioles are armed with slender spines that point forward, toward the leaf tip. Foliage can be green, blue-green or silver, with leaf blades up to 1 m across. Branched, interfoliar inflorescences, about 15 cm long, usually have either male or female flowers; but being consistently variable, both flower types are sometimes found on one palm. The flower parts usually occur in three's, except the stamens, with six per flower. Growing from coastal areas to near 1,000 m elevations, this popular ornamental is drought tolerant, moderately salt tolerant, tolerant of poor soils and is among the most cold hardy palms. (Marion County; B2006-191; Corinne M. Hermle; 12 May 2006) (Mabberley 1997; Meerow 2006; Uhl and Dransfield 1987; <http://www.kew.org>)

*Dimocarpus longan* Lour. (A genus with six species, native to Asia and Australia.) Sapindaceae. **Longan.** Known to many by the joyful name *Euphoria longan*, a synonym, this 9-12 m tall tree is often pruned to keep fruits within easy harvesting height. The evergreen, even-pinnate leaves are alternate, elliptic to ovate-oblong, and glossy-green above. Tiny white to pale-yellow flowers in upright terminal panicles produce clusters of tan or brownish, globose, 1.25-2.5 cm fruits with a wrinkled or honeycomb patterned surface. The shiny black seed, with a circular white hylar scar, is completely surrounded by a fleshy aril, the edible part of the fruit. Probably native to southern China and Southeast Asia, longans were brought to Florida by the USDA as early as the late 1800s. This species is not yet a major crop in Florida's tropical fruit industry, but interest has increased since the introduction of the cultivar 'Kohala' in 1954. The longan is thought to produce fruits that are less sweet and fragrant than its more familiar relative, the lychee (*Litchi chinensis* Sonn.). Although said to produce more abundant fruit and withstand windy weather better than lychee, longans require richer soil and a modest chilling period for reliable flowering and fruit production. Fruits are eaten fresh, dried or canned, and drunk as a tea or a liqueur. (Brevard County; B2006-251; Ali A. Darrat; 16 June 2006) (Morton 1987; Staples and Herbst 2005; <http://www.actahort.org>; <http://florawww.eeb.uconn.edu>)

*Ebenopsis ebano* (Berlandier) Barneby & Grimes (A genus of three species, native to arid and semi-arid regions of Mexico and South Texas.) Leguminosae. **Texas ebony.** This dry-season deciduous tree grows to 20 m tall and can have one to several trunks with flaking, cracked bark. The crowded, bipinnate leaves with stipular spines have three to six pairs of pinnae. Leaflets are oblong or rhombic-oblong, from 7-16 mm long and 3 to 6 mm wide. The

inflorescence, including the peduncle, is 2-5 cm long. Each flower consists of an inconspicuous calyx and corolla and 33-66 showy, white to cream colored stamens. The woody pods, which can hang on the tree up to one year before they fall and then open, are straight or somewhat curved. When mature, these pods are covered with dark brown to black felt-like hairs and can reach 10 cm in length. In the wild, this tree is usually seen in thickets with a shrub-like growth habit to no more than 8 m tall, but as a shade tree in xeriscapes, it can become a large tree with little need for irrigation after it is established. The tree has also become popular as a bonsai plant and is prized by woodworkers for its fine-grained wood that is colored an unusual reddish-brown with a hint of purple. (Miami-Dade County; B2006-206; Lynn D. Howerton; 22 May 2006) (Llamas 2003; Barneby and Grimes 1996; <http://www.public.asu.edu>)

*Phyla nodiflora* (L.) Greene (A genus of 15 species, from tropical and warm temperate areas.)  
Verbenaceae. **Capeweed, matchsticks, turkey tangled fogfruit.** This native perennial has a creeping, prostrate, often purple or purple-striped stem with roots at the nodes. The opposite leaves have very short petioles and ovate to oblong to obovate leaf blades with six to ten teeth along the margin. Tiny flowers with white to rose-purple corollas are held in a bractate head on an upright 3-10 cm peduncle. The dry fruit separates into two nutlets. This herbaceous species can form a matted ground cover and grows in both uplands and wetlands. It can be found as a weed in lawns or growing wild in pastures and disturbed sites. This species is a larval host for the phaon crescent and white peacock butterflies. (Sumter County; B2006-242; Patrick R. Hamilton; 1 June 2006) (Mabberly 1997; Minno *et al.* 2005; Tobe 1998)

*Quercus minima* (Sarg.) Small. (A genus with about 600 temperate and subtropical species.)  
Fagaceae. **Dwarf live oak.** This species is unusual among the mighty oaks in that it has a short-statured (rarely more than 1 m tall), shrubby habit. This evergreen spreads to form thickets from underground runners. The leathery leaves are 3-12 cm long and quite variable in shape and luing, but on mature branches, the margins are usually entire and revolute. Cuplike involucre enclose about one-third the length of the shiny, dark brown, ovoid acorns. Seeing acorns on what appear to be oak seedlings can be quite surprising for visitors unaccustomed to Florida's pine flatwood forests. (Polk County; B2006-196; Christine A. Zamora; 29 April 2006) (Kurz and Godfrey 1993)

*Urena lobata* L. Malvaceae (A genus of six tropical and warm temperate species.) **Caesar weed, Congo jute, bur mallow.** In areas with freezing temperatures, this perennial shrub, 0.5-2 m tall, can die back in winter to return from the roots in spring. Leaves are alternate, ovate and usually with finely serrate margins. The petioles are roughly equal in length to the leaf blades, and the palmately-veined blades may have three or no lobes. Leaves and stems have stellate hairs. The five-merous flowers, about 1.5 cm long, arise from the leaf axils. Corollas are pink, but darker rose at the base. The fruit matures to 1 cm across with bristles that can attach to hair or clothing for dispersal. These fruits split into five segments, each containing a single dark brown seed. This species grows well in disturbed sites, including wetland areas where it can form thickets. It is included on the FLEPPC Invasive Species List-Category II. (Lake County; B2006-183; Charlie L. Spriggs; 9 May 2006) (Godfrey and Wooten 1981; Taylor 1992)

**REFERENCES**

- Barneby, R.C. and J.W. Grimes. 1996. Silk tree, guanacaste, monkey's earring: A generic system for the synandrous Mimosaceae of the Americas. *Memoires of the New York Botanical Garden* 74: 1-192.
- Godfrey, R.K. and J.W. Wooten. 1981. Aquatic and wetland plants of the southeastern United States: Dicotyledons. University of Georgia Press. Athens, Georgia. 933 p.
- Kurz, H. and R. K. Godfrey. 1993. Trees of northern Florida. University Press of Florida. Gainesville, Florida. 311 p.
- Llamas, K.A. 2003. Tropical flowering plants: A guide to identification and cultivation. Timber Press. Portland, Oregon. 423 p.
- Mabberley, D.J. 1997. The plant book, 2<sup>nd</sup> edition. Cambridge University Press. Cambridge, England. 858 p.
- Meerow, A. W. 2006. Betrock's landscape palms. Betrock Information Systems. Hollywood, Florida. 190 p.
- Minno, M.C., J.F. Butler, and D.W. Hall. 2005. Florida butterfly caterpillars and their host plants. University Press of Florida. Gainesville, Florida. 341 p.
- Morton, J.F. 1987. Fruits of warm climates. Julia F. Morton. Miami, Florida. Distributed by Creative Resources Systems, Winterville, North Carolina. 505 p.
- Staples, G.W. and D.R. Herbst. 2005. A tropical garden flora: plants cultivated in the Hawaiian Islands and other tropical places. Bishop Museum Press, Honolulu, Hawaii. 908 p.
- Taylor, W.K. 1992. Taylor Trade Publishing. Guide to Florida wildflowers. Lanham, Maryland. 320 p.
- Tobe, J.D. 1998. Florida wetland plants: An identification manual. Florida Department of Environmental Protection. Tallahassee, Florida. 598 p.
- Uhl, N.W. and J. Dransfield. 1987. Genera Palmarum. Allen Press. Lawrence, Kansas. 610 p.

## ENTOMOLOGY SECTION

### Compiled by Susan E. Halbert, Ph.D.

For the month of May, there were 843 samples and 29,818+ specimens. In June, there were 1,054 samples and 82,324+ specimens. Some of the samples are listed below:

#### ORNAMENTALS, WOODY PLANTS AND PALMS:

*Calliandra* sp. (powderpuff plant) -- *Pseudococcus elisae* Borchsenius, **banana mealybug**: A moderate infestation was found on a plant in a trailer park in Florida City (Miami-Dade County; E2006-2908; Edward T. Putland and Lynn D. Howerton; 22 May 2006). NEW DPI HOST RECORD.

*Cocos nucifera* (coconut palm) -- *Hypothenemus* sp., **a scolytid beetle**: A slight infestation was found at a residence in St. Petersburg (Pinellas County; E2006-3334; Gabriella M. Bernard; 31 May 2006). The newly emerging leaf collapsed and showed signs of infestation in the unfolded leaf base. The palm was about 2 m tall. This is an unusual host for the beetle (Dr. Michael C. Thomas).

*Eugenia luschnathiana* (uvalha do campo) -- *Paratachardina lobata* (Chamberlin), **lobate lac scale**: A severe infestation was found on a plant at Greynolds Park in Miami (Miami-Dade County; E2006-3899; Olga Garcia; 22 June 2006). NEW DPI HOST RECORD.

*Ficus elastica* (rubber tree) -- *Scirtothrips dorsalis* Hood, **chili thrips**: A slight infestation was found at a nursery in Venus (Highlands County; E2006-2271; Susan C. Griego; 27 April 2006). NEW DPI HOST RECORD.

*Filicium decipiens* (fern tree, Japanese fern tree) -- *Icerya rileyi* nr. Cockerell, **a margarodid scale**: A slight infestation was found on plants at a nursery in Ft. Lauderdale (Broward County; E2006-2612; Eduardo M. Varona, USDA/APHIS/PPQ, Greg S. Hodges and Susan E. Halbert; 11 May 2006). NEW DPI HOST RECORD.

*Ligustrum japonicum* (waxleaf privet, Japanese privet, ligustrum) -- *Scirtothrips dorsalis* Hood, **chili thrips**: A severe infestation was found at a residence in Sanford (Seminole County; E2006-3343; homeowner; 2 June 2006). NEW DPI HOST RECORD.

*Phoenix roebelenii* (pygmy date palm) -- *Phoenicoccus marlatti* (Cockerell), **red date scale**: A severe infestation was found at a residence in Sarasota (Sarasota County; E2006-3799; K. Lea Etchels; 21 June 2006). NEW DPI COUNTY RECORD.

*Pittosporum tobira* (pittosporum, Japanese pittosporum, Japanese cheesewood) -- *Scirtothrips dorsalis* Hood, **chili thrips**: A moderate infestation was found at a residence in Sanford (Seminole County; E2006-3341; homeowner; 2 June 2006). NEW DPI HOST RECORD.

*Plumeria rubra* (plumeria, frangipani) -- *Aceria* sp., **an eriophyid mite**: A moderate infestation was found on plants from Hawaii at a nursery in Homestead (Miami-Dade County; E2006-2975; Holly B. Glenn, University of Florida; 22 May 2006). NEW DPI HOST RECORD for the genus. This probably is a new species. A second eriophyid found in the sample was determined to be in an undescribed genus in the Phyllocoptini (Dr. W. C. 'Cal' Welbourn).

*Rhaphiolepis umbellata* (yedda hawthorn) -- *Scirtothrips dorsalis* Hood, **chili thrips**: A moderate infestation was found at a residence in Sanford (Seminole County; E2006-3340; homeowner; 2 June 2006). NEW DPI HOST RECORD.

*Rhododendron* sp. (azalea) -- *Scirtothrips dorsalis* Hood, **chili thrips**: An infestation was found at a residence in Orlando (Orange County; E2006-3486; Brian D. Saunders, USDA/APHIS/PPQ/CAPS, and Adam J. Silagyi; 7 June 2006). DPI HOST RECORD.

*Schefflera arboricola* (dwarf schefflera) -- *Scirtothrips dorsalis* Hood, **chili thrips**: A moderate infestation was found at a nursery in Homestead (Miami-Dade County; E2006-3924; Holly B. Glenn, University of Florida; 20 June 2006). NEW DPI HOST RECORD.

*Syzygium jambos* (rose-apple, Malabar apple) -- *Zaprionus indianus* Gupta, **a fruit fly**: A moderate number of specimens were reared from fallen fruit in Ft. Pierce (St. Lucie County; E2006-3316; Kenneth L. Hibbard and Michelle Maille; 23 May 2006). NEW DPI HOST RECORD.

*Viburnum suspensum* (viburnum) -- *Scirtothrips dorsalis* Hood, **chili thrips**: An infestation was found in a business landscape in Orlando (Orange County; E2006-3810; Brian D. Saunders and Adam J. Silagyi, USDA/APHIS/PPQ/CAPS; 6 June 2006). NEW DPI HOST RECORD.

#### ORNAMENTALS, FOLIAGE PLANTS:

*Bambusa* sp. (bamboo) -- *Palmicultor lumpurensis* (Takahashi), **a bamboo mealybug**: A slight infestation was found on plants at a nursery in St. Petersburg (Pinellas County; E2006-3738; Gabriela M. Bernard; 16 June 2006). NEW DPI COUNTY RECORD.

*Caladium bicolor* (caladium, heart of Jesus) -- *Aleuroglandulus malangae* Russell, **a whitefly**: A severe infestation was found on a plant at a residence in Ft. Myers (Lee County; E2006-4017; V. Anne Kemmerer, USDA/APHIS/PPQ; 26 June 2006). NEW DPI COUNTY RECORD.

#### ORNAMENTALS, FLOWERING PLANTS:

*Gardenia jasminoides* (gardenia, cape jasmine) -- *Scirtothrips dorsalis* Hood, **chili thrips**: A moderate infestation was found at a residence in Sanford (Seminole County; E2006-3342; homeowner; 2 June 2006). NEW DPI HOST RECORD.

*Senna surattensis* (glossy shower) -- **a pyralid moth**: Slight infestations were found on about 25% of hundreds of plants at a nursery in Homestead (Miami-Dade County; E2006-3263; Lynn D. Howerton; 31 May 2006). NEW DPI HOST RECORD. No species of pyralids have been previously reported from this plant species. (Dr. John B. Heppner).

#### FOREST AND SHADE TREES:

*Acacia cornigera* (bullhorn acacia) -- *Icerya rileyi* nr. Cockerell, **a margarodid scale**: A severe infestation was found at Port Everglades (Broward County; E2006-2631; Margarita A. Lahens and Eduardo M. Varona, USDA/APHIS/PPQ, William A. Thiel, Greg S. Hodges and Susan E. Halbert; 11 May 2006). NEW DPI HOST RECORD.

*Muntingia calabura* (calabur, strawberry-tree) -- *Myllocerus undatus* Marshall, **a weevil**: A slight infestation was found on a plant at a residence in Miami (Miami-Dade County; E2006-4069; Olga Garcia; 28 June 2006). NEW DPI HOST RECORD.

#### FOOD AND CROP PLANTS:

*Lycopersicon esculentum* (garden tomato, tomate, ajitomate) -- *Phthia picta* (Drury), **a coreid bug**: A specimen was found at a residence in Ft. Pierce (St. Lucie County; E2006-4097; Marilyn M. Quigley; 29 June 2006). NEW DPI COUNTY RECORD.

*Mentha* sp. (mint) -- *Ovatus crataegarius* (Walker), **a mint aphid**: A slight infestation was found on 500 plants at a nursery in Ruskin (Hillsborough County; E2006-2477; Karyn L. Pippenger; 9 May 2006). NEW DPI COUNTY RECORD.

*Ovatus mentharius* (van der Goot), **a mint aphid**: A parasitized specimen was found on a plant in the student gardens at the University of Florida in Gainesville (Alachua County;

E2006-2315; Susan E. Halbert, Greg S. Hodges, Richard E. Weaver and David C. Ziesk; 3 May 2006). NEW DPI COUNTY RECORD.

### CITRUS:

*Citrus x paradisi* (grapefruit) -- *Toxytrypana curvicauda* Gerstaecker, **papaya fruit fly**: A specimen with ovipositor fully extended into a ripe grapefruit was collected in Safety Harbor (Pinellas County; E2006-2644; Thomas W. Turner, Agricultural Environmental Services; 10 May 2006).

*Citrus* sp. (citrus) -- *Heraeus pelbejus* Stål, **a lygaeid bug**: A specimen was collected on a citrus tree for sale at a roadside citrus stand in Yulee (Nassau County; E2006-3689; Peter Carbon; 16 June 2006). NEW DPI COUNTY RECORD.

### WEEDS AND GRASSES:

*Ambrosia artemisiifolia* (common ragweed) -- *Icerya rileyi* nr. Cockerell, **a margarodid scale**: A severe infestation was found at Port Everglades (Broward County; E2006-2633; Margarita A. Lahens and Eduardo M. Varona, USDA/APHIS/PPQ, Susan E. Halbert, Greg S. Hodges and William A. Thiel; 11 May 2006). NEW DPI HOST RECORD. Another specimen was found near the Miami International Airport (Miami-Dade County; E2006-4041; Nestor B. Ochoa; 27 June 2006). NEW DPI COUNTY RECORD.

*Myllocerus undatus* Marshall, **a weevil**: A severe infestation was found along a roadside in Miami (Miami-Dade County; E2006-4071; Edward T. Putland and Duraid I. Hanna; 28 June 2006). NEW DPI HOST RECORD.

*Casuarina equisetifolia* (Australian-pine, she-oak, horsetail tree) -- *Icerya rileyi* nr. Cockerell, **a margarodid scale**: An infestation was found at Port Everglades (Broward County; E2006-2608; Margarita A. Lahens and Eduardo M. Varona, USDA/APHIS/PPQ, William A. Thiel, Greg S. Hodges and Susan E. Halbert; 11 May 2006). NEW DPI HOST RECORD.

*Chamaesyce hypericifolia* (graceful sandmat, spurge) -- *Icerya rileyi* nr. Cockerell, **a margarodid scale**: A moderate infestation was found on weeds at a nursery in Dania (Broward County; E2006-2614; Eduardo M. Varona, USDA/APHIS/PPQ, William A. Thiel, Greg S. Hodges and Susan E. Halbert; 11 May 2006). NEW DPI HOST RECORD.

Gramineae/Poaceae (grass) -- *Icerya rileyi* nr. Cockerell, **a margarodid scale**: A severe infestation was found at Port Everglades (Broward County; E2006-2619; Margarita A. Lahens and Eduardo M. Varona, USDA/APHIS/PPQ, William A. Thiel, Greg S. Hodges and Susan E. Halbert; 11 May 2006). NEW DPI HOST RECORD.

*Indigofera tinctoria* (true indigo) -- *Icerya purchasi* Maskell, **cottoncushion scale** and *Icerya rileyi* nr. Cockerell, **a margarodid scale**: A severe infestation of both species was found on weeds near the USDA fumigation facility at Port Everglades (Broward County; E2006-2621, 2628; Margarita A. Lahens and Eduardo M. Varona, USDA/APHIS/PPQ, William A. Thiel, Greg S. Hodges and Susan E. Halbert; 11 May 2006). Both finds are NEW DPI HOST RECORDS.

*Ludwigia peruviana* (Peruvian primrose-willow) -- *Icerya rileyi* nr. Cockerell, **a margarodid scale**: A slight infestation was found at a nursery in Ft. Lauderdale (Broward County; E2006-2609; Eduardo M. Varona, USDA/APHIS/PPQ, William A. Thiel, Greg S. Hodges and Susan E. Halbert; 11 May 2006). NEW DPI HOST RECORD.

*Macroptilium lathyroides* (wild bushbean) -- *Icerya rileyi* nr. Cockerell, **a margarodid scale**: A moderate infestation was found on weeds at a nursery in Dania (Broward County; E2006-

- 2611; Eduardo M. Varona, USDA/APHIS/PPQ, William A. Thiel, Greg S. Hodges and Susan E. Halbert; 11 May 2006). NEW DPI HOST RECORD.
- Rhynchospora* sp. (a sedge) -- *Icerya rileyi* nr. Cockerell, **a margarodid scale**: A moderate infestation was found on weeds at a nursery in Dania (Broward County; E2006-2618; Eduardo M. Varona, USDA/APHIS/PPQ, William A. Thiel, Greg S. Hodges and Susan E. Halbert; 11 May 2006). NEW DPI HOST RECORD.
- Ricinus communis* (castor bean) -- *Icerya rileyi* nr. Cockerell, **a margarodid scale**: A severe infestation was found at Port Everglades (Broward County; E2006-2603; Margarita A. Lahens and Eduardo M. Varona, USDA/APHIS/PPQ, William A. Thiel, Greg S. Hodges and Susan E. Halbert; 11 May 2006). NEW DPI HOST RECORD.
- Scirtothrips dorsalis* Hood, **chili thrips**: An infestation was found at a discount garden center in Orlando (Orange County; E2006-3492; Brian D. Saunders and Adam J. Silagyi, USDA/APHIS/PPQ/CAPS; 8 June 2006). NEW DPI HOST RECORD.
- Ruellia brittoniana* (Mexican petunia) -- *Aleurotrachelus trachoides* (Back), **a whitefly**: A severe infestation was found on a plant at a residence in Iona (Lee County; E2006-2817; Patricia L. McMackins, USDA/APHIS/PPQ; 17 May 2006). NEW DPI HOST RECORD.
- Samolus valerandi* (seaside brookweed) -- *Icerya rileyi* nr. Cockerell, **a margarodid scale**: A moderate infestation was found on weeds at a nursery in Dania (Broward County; E2006-2630; Eduardo M. Varona, USDA/APHIS/PPQ, William A. Thiel, Greg S. Hodges and Susan E. Halbert; 11 May 2006). NEW DPI HOST RECORD.
- Sesbania* sp. (sesbania) -- *Icerya rileyi* nr. Cockerell, **a margarodid scale**: A severe infestation was found at Port Everglades (Broward County; E2006-2661; Margarita A. Lahens and Eduardo M. Varona, USDA/APHIS/PPQ, William A. Thiel, Greg S. Hodges and Susan E. Halbert; 11 May 2006). NEW DPI HOST RECORD.
- Solanum viarum* (tropical soda-apple, Sodom apple, apple-of-Sodom) -- *Heliothis subflexus* Guenee, **subflexa budworm**: A slight infestation was found on a plant at the DPI office in Ft. Pierce (St. Lucie County; E2006-3842; Kenneth L. Hibbard and Michelle M. Amaral; 1 June 2006). NEW DPI HOST RECORD.
- Spermacoce verticillata* (shrubby false buttonweed) -- *Icerya rileyi* nr. Cockerell, **a margarodid scale**: A severe infestation was found at Port Everglades (Broward County; E2006-2625; Margarita A. Lahens and Eduardo M. Varona, USDA/APHIS/PPQ, William A. Thiel, Greg S. Hodges and Susan E. Halbert; 11 May 2006). NEW DPI HOST RECORD.
- Sphagneticola trilobata* (creeping oxeye, wedelia) -- *Icerya rileyi* nr. Cockerell, **a margarodid scale**: A severe infestation was found on weeds near the USDA fumigation facility at Port Everglades (Broward County; E2006-2632; Margarita A. Lahens and Eduardo M. Varona, USDA/APHIS/PPQ, William A. Thiel, Greg S. Hodges and Susan E. Halbert; 11 May 2006). NEW DPI HOST RECORD.
- Syzygium cuminii* (jambolan plum, Java plum, black plum, jamun, duhat) -- *Mylocerus undatus* Marshall, **a weevil**: A severe infestation was found on a plant at a gas station in Punta Gorda (Charlotte County; E2006-2937; Reuben E. Sibert, USDA/APHIS/PPQ; 23 May 2006). NEW DPI COUNTY RECORD.
- Tripsacum dactyloides* (eastern gamagrass, Fakahatchee grass) -- *Duplachionaspis divergens* Green, **an armored scale**: A slight infestation was found at a nursery in Zolfo Springs (Hardee County; E2006-2434; Susan C. Griego; 4 May 2006). NEW DPI COUNTY RECORD.

*Vicia acutifolia* (fourleaf vetch) -- *Icerya rileyi* nr. Cockerell, **a margarodid scale**: A moderate infestation was found on weeds at a nursery in Dania (Broward County; E2006-2606; Eduardo M. Varona, USDA/APHIS/PPQ, William A. Thiel, Greg S. Hodges and Susan E. Halbert; 11 May 2006). NEW DPI HOST RECORD.

#### NATIVE AND NATURALIZED PLANTS:

*Baccharis halimifolia* (salt bush, groundsel bush) -- *Icerya rileyi* nr. Cockerell, **a margarodid scale**: A moderate infestation was found on weeds at a nursery in Dania (Broward County; E2006-2634; Eduardo M. Varona, USDA/APHIS/PPQ, Greg S. Hodges, William A. Thiel and Susan E. Halbert; 11 May 2006). NEW DPI HOST RECORD.

*Borrchia arborescens* (sea oxeye, tree seaside tansy) -- *Pseudococcus odermatti* Miller & Williams, **a mealybug**: A slight infestation was found on 10 of 20 plants at a marina in Homestead (Miami-Dade County; E2006-2907; Edward T. Putland and Lynn D. Howerton; 22 May 2006). NEW DPI HOST RECORD.

*Canavalia rosea* (seaside bean, bay bean, seaside jackbean) -- **a gracillariid leafminer**: A moderate infestation was found on plants at John Lloyd State Park in Dania (Broward County; E2006-3066; William A. Thiel; 22 May 2006). NEW DPI HOST RECORD. No leafminer has previously been recorded from this plant species (Dr. John B. Heppner).

*Eclipta prostrata* (false daisy) -- *Icerya rileyi* nr. Cockerell, **a margarodid scale**: A moderate infestation was found on plants at a nursery in Dania (Broward County; E2006-2604; Eduardo M. Varona, USDA/APHIS/PPQ, William A. Thiel, Greg S. Hodges and Susan E. Halbert; 11 May 2006). NEW DPI HOST RECORD.

*Gaura angustifolia* (southern beeblossom, southern gaura) -- *Homaemus proteus* Stål, **a scutellerid bug**: A slight infestation was found on 12 plants at a residence in Ft. Myers (Lee County; E2006-3546; Reuben E. Sibert, USDA/APHIS/PPQ; 9 June 2006). NEW DPI COUNTY RECORD. This species was first reported in Florida in 1995 (Dr. Susan E. Halbert).

*Laguncularia racemosa* (white mangrove) -- *Scirtothrips dorsalis* Hood, **chili thrips**: A severe infestation was found at Homestead Bayfront Park in Homestead (Miami-Dade County; E2006-3018; Lynn D. Howerton and Edward T. Putland; 22 May 2006). NEW DPI HOST RECORD.

*Opuntia* sp. (cactus) -- *Cactoblastis cactorum* (Berg), **cactus moth**: A slight infestation was found on a plant at a garden in Gainesville (Alachua County; E2006-3792; Christine A. Zamora; 22 June 2006). NEW DPI COUNTY RECORD.

*Pluchea carolinensis* (cure for all) -- *Icerya rileyi* nr. Cockerell, **a margarodid scale**: A severe infestation was found on weeds at Port Everglades (Broward County; E2006-2627; Margarita A. Lahens and Eduardo M. Varona, USDA/APHIS/PPQ, William A. Thiel, Greg S. Hodges and Susan E. Halbert; 11 May 2006). NEW DPI HOST RECORD.

*Pluchea odorata* (sweetscent) -- *Icerya rileyi* nr. Cockerell, **a margarodid scale**: A moderate infestation was found on weeds at a nursery in Dania (Broward County; E2006-2626; Eduardo M. Varona, USDA/APHIS/PPQ, William A. Thiel, Greg S. Hodges and Susan E. Halbert; 11 May 2006). NEW DPI HOST RECORD.

*Vigna luteola* (hairypod cowpea) -- *Icerya purchasi* Maskell, **cottonycushion scale** and *Icerya rileyi* nr. Cockerell, **a margarodid scale**: A severe infestation of both species was found near the USDA fumigation facility at Port Everglades (Broward County; E2006-2605 Margarita

A. Lahens and Eduardo M. Varona, USDA/APHIS/PPQ, William A. Thiel, Greg S. Hodges and Susan E. Halbert; 11 May 2006). Both finds are NEW DPI HOST RECORDS.

#### **ARTHROPOD DETECTION:**

*Geocoris uliginosus* (Say), **a bigeyed bug**: A specimen was found foraging on *Chenopodium album* (lamb's-quarters) at a farm in Devils Garden (Hendry County; E2006-3050; Olga Garcia; 26 May 2006). NEW DPI COUNTY RECORD.

*Gymnetis flavomarginata* Blanchard, **a scarab beetle**: A specimen was found at a residence in Sorrento (Lake County; E2006-3921; Leslie J. Wilber; 18 June 2006). NEW DPI COUNTY RECORD. This is an exotic beetle that has recently established in Central Florida (Dr. Michael C. Thomas).

*Selenops submaculosus* Bryant, **a spider**: A specimen was found under a light at the University of Florida, IFAS Florida Medical Entomology Lab - Vero Beach (Indian River County; E2006-2312; Sean M. McCann, University of Florida; 26 April 2006). NEW DPI COUNTY RECORD. This species was introduced from the Bahamas and has been recorded previously from Miami-Dade, Broward and Palm Beach counties (Dr. G.B. Edwards).

*Sphecomyiella valida* (Harris), **a fly**: A specimen was found in a Jackson trap at MacDill Air Force Base in Tampa (Hillsborough County; E2006-3625; Kathleen A. Miller, USDA/APHIS/PPQ; 6 June 2006). NEW DPI COUNTY RECORD.

*Zaprionus indianus* Gupta, **a fruit fly**: A specimen was found in a multilure trap in Dunedin (Pinellas County; E2006-3729; David E. Dean; 5 June 2006). Another specimen was found in a multilure trap in Miami (Miami-Dade County; E2006-3642; Nestor B. Ochoa; 8 June 2006). Both finds are NEW DPI COUNTY RECORDS.

**NEMATODOLOGY SECTION**  
**Compiled by Janete A. Brito, Ph.D.**

A total of 3,787 samples (3,367 for morphological and 420 for molecular identifications) were processed in May and June 2006. Details are shown below:

<b>Certification and Regulatory Samples:</b>	<b>Other Samples:</b>
Multi-state Certification for National and International Export.....2,098	Plant Problems..... 34
California Certification .....820	Intrastate Survey, Random ..... 285
Pre-movement (Citrus Nursery Certification) .....56	
Site or Pit Approval (Citrus Nursery and Other Certifications).....74	<b>Molecular Identifications*</b> ..... 420
	*The majority of these analyses involved root-knot nematode species.

**Nematodes of Special Interest**

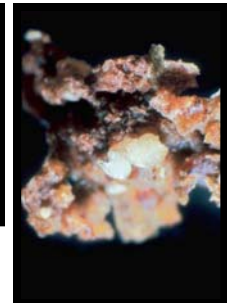
Nematodes of special interest detected and/or identified in May and June 2006:

*Prunus persica* (peach) - *Meloidogyne floridensis* (Handoo *et al.*, 2004), the **peach root-knot nematode**, was found infecting the roots of the peach cultivar ‘Flordaguard’ (Alachua; N06-00030, Donald W. Dickson, 19 January 2006). This nematode is of special importance because it can reproduce on root-knot nematode resistant peach rootstocks grown in Florida.

*Myrica cerifera* (wax myrtle) - *Meloidogyne mayaguensis* Rammah and Hirschmann, 1988, a **root-knot nematode**, was extracted from roots of this native plant (Flagler County, N06-00771, Charlie Spriggs, 25 May 2007). This nematode also infects several ornamental plants in Florida. This finding is a **NEW COUNTY RECORD**.



Roots of wax myrtle infected with *Meloidogyne mayaguensis*  
Photograph courtesy of Dr. J. A. Brito and F. M. Beckman



A close up view of a swollen female of *M. mayaguensis* (a) and egg mass (b). Dr. J. A. Brito and J. Lotz

**COLLECTORS SUBMITTING FIVE OR MORE SAMPLES THAT WERE PROCESSED FOR NEMATOLOGICAL ANALYSIS DURING MAY AND JUNE 2006:**

Anderson, James L. .... 148	Pate, JoAnn ..... 74
Bailey, W. Wayne ..... 21	Qiao, Ping ..... 193
Walker, James ..... 6	Robinson, William L. .... 71
Jones, Cheryl A. .... 7	Salisbury, Thomas L. .... 310
LeBoutillier, Karen W. .... 287	Spriggs, Charles L. .... 157
Ochoa, Ana L. .... 282	Stone, Carrie S. .... 102

## PLANT PATHOLOGY

### Compiled by Robert M. Leahy

For this period, the Plant Pathology Section received and processed 1,586 specimens. These included 773 pathology, two soil, 28 bee, 364 citrus greening and 14 miscellaneous samples. Full pathogenicity tests for citrus canker were performed on nine samples, and visual examinations were conducted on 11 samples from South East Florida, 105 from Central Gulf Coast Florida, 86 from South West Gulf Coast Florida, 179 from Central Florida and 15 from North Florida.

#### ORNAMENTALS, WOODY PLANTS AND PALMS:

*Buxus sempervirens* (boxwood) -- *Septobasidium* sp., **insect parasite**: Collected at a dooryard in Windermere, Orange County (29 June 2006, George D. Warden, P2006-02127). NEW HOST RECORD.

*Loropetalum chinense* (Chinese fringe, loropetalum) -- *Pseudocercospora neoliquidambaris*, Naskashima et. Kobayashi, **leaf spot**: Collected at a nursery in Zolfo Springs, Hardee County, (4 May 2006, Susan C. Griego, P2006-01407). NEW HOST RECORD.

*Syagrus romanzoffiana* (queen palm) -- *Ganoderma zonatus*, **butt rot**: Collected at dooryard in Sarasota, Sarasota County (26 June 2006, Susan Graham, P2006-02112).

#### ORNAMENTALS, FOLIAGE PLANTS:

*Dionaea* sp. (Venus fly trap) -- *Phytophthora* sp., *Cylindrocladiella peruviana* and *Idriella lunata*, **leaf spot/blight**: Collected at a nursery in Eustis, Lake County (26 May 2006, Mary C. Sellers, P2006-01509). NEW HOST RECORD.

*Phyllostachys nigra* (black bamboo) -- *Cylindrocarpon destructans* (Zinssmeister) Scholten, **root rot**: Collected at a garden in Gainesville, Alachua County (22 June 2006, Christine A. Zamora, P2006-02034). NEW HOST RECORD.

#### ORNAMENTALS, FLOWERING PLANTS:

x *Ascocenda* sp. (orchid) -- *Stenella* sp., **leaf spot**: Collected at a dooryard in Haines City, Polk County (22 June 2006, homeowner, P2006-02023). NEW HOST RECORD.

*Alpinia coerulea* (alpinia) -- *Phoma* sp., **leaf spot**: Collected at a nursery in Miami, Miami-Dade County (13 June 2006, Gwen H. Myres, P2006-01972). NEW HOST RECORD.

*Canna* sp. (canna lily) -- Canna yellow mottle, **virus**: Collected at a nursery in Gainesville, Alachua County (30 May 2006, nursery employee, P2006-01568). NEW STATE RECORD.

*Heliconia subulata* (heliconia) -- *Bipolaris* sp., **leaf spot**: Collected at a nursery in Miami, Miami-Dade County (13 June 2006, Gwen H. Myers, P2006-01971). NEW HOST RECORD.

*Rosa* sp. (rose) -- *Cytospora* sp., **stem lesion**: Collected at a dooryard in Gainesville, Alachua County (5 June 2006, homeowner, P2006-01891).

*Rudbeckia hirta* (blackeyed Susan) -- *Phytophthora drechsleri* Tucker, **root rot**: Collected at a nursery in Gainesville, Alachua County (27 June 2006, nursery employee, P2006-02059). NEW HOST RECORD.

#### WEEDS AND GRASSES:

*Cichorium intybus* (chicory) -- *Cercospora cichorii*, **leaf spot**: Collected at nursery in Wimauma, Hillsborough County, (1 May 2006, Douglas A. Restom Gaskill and Michael Patterson, USDA/APHIS, P2006-01353). NEW STATE RECORD.

*Clitoria ternatea* (butterfly pea) -- *Common mosaic*, **virus**: Collected at a nursery in Palmetto, Manatee County (15 May 2006, Mark L. Runnals, P2006-01469). NEW HOST RECORD.

#### **FOOD AND CROPS:**

*Annona cherimola* (cherimoya) -- *Fusicladium* sp., **fruit spot**: Collected at a dooryard in Miami, Miami-Dade County (16 May 2006, Juan L. Garcia Lopez, P2006 01494). NEW HOST RECORD.

*Petroselinum crispum* (parsley) -- *Alternaria petroselini*, **leaf spot**: Collected at a nursery in Wimauma, Hillsborough County (1 May 2006, Douglas A. Restom Gaskill and Michael Patterson, USDA/APHIS, P2006 01352).